



GMT MONTHLY MEMBERSHIP PROGRESS REPORT

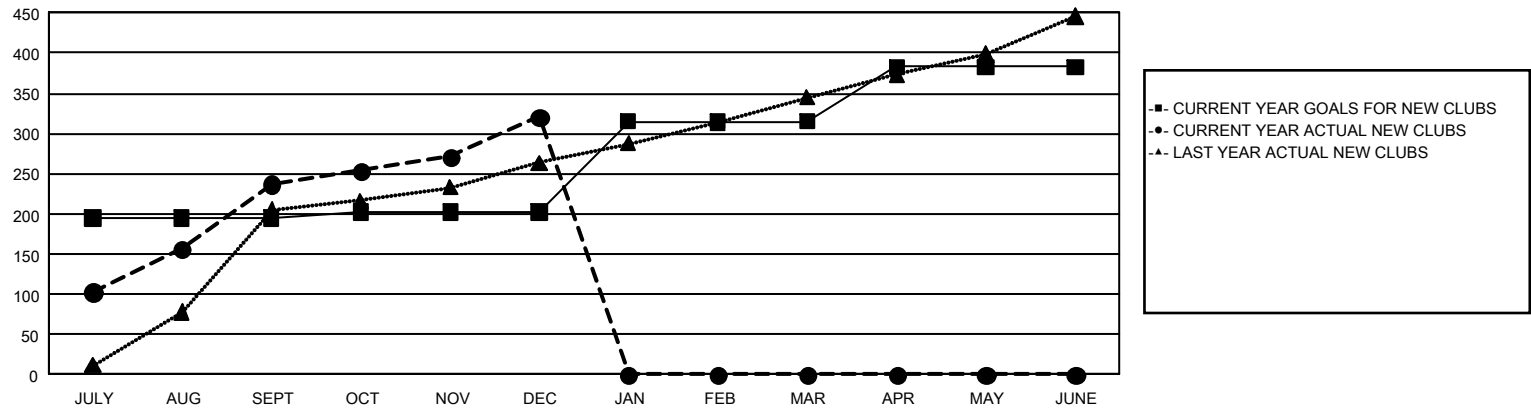
GAT Constitutional Area 6 - South Asia and Middle East

Results as of: 12/31/2024

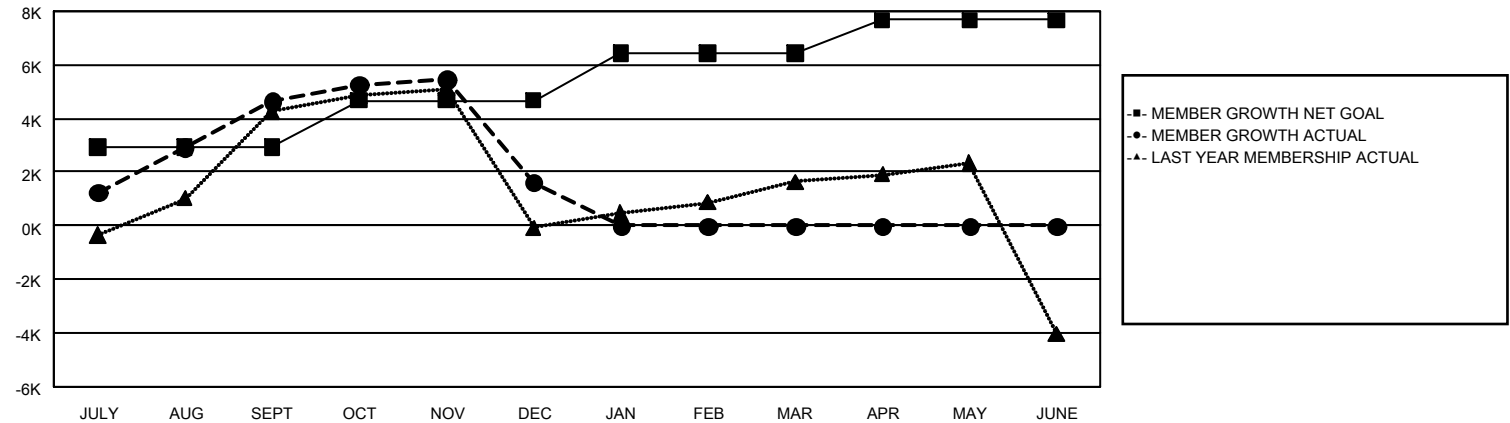
REPORT DOES NOT INCLUDE CLUBS IN UNDISTRICTED AREAS.

Clubs				Members			
RESULTS FOR 2024-2025				RESULTS FOR 2024-2025			
QUARTER	NEW CLUB GOAL	NEW CLUBS	DROPPED CLUBS	QUARTER	MEMBER GROWTH NET GOAL	MEMBER GROWTH ACTUAL	DROPPED MEMBERS ACTUAL (including transfers)
JULY/AUG/SEPT	195	237	57	JULY/AUG/SEPT	2,933	9,801	3,934
OCT/NOV/DEC	7	84	148	OCT/NOV/DEC	1,737	5,324	7,718
JAN/FEB/MAR	113	0	0	JAN/FEB/MAR	1,772	0	0
APR/MAY/JUNE	68	0	0	APR/MAY/JUNE	1,228	0	0

GOALS AND ACTUAL NEW CLUBS CUMULATIVE



GOALS AND ACTUAL MEMBERS CUMULATIVE



DROPPED CLUBS: 205		1,768 CLUBS OF 4,148 ADDED 1 OR MORE NEW MEMBERS	<u>GENDER DISTRIBUTION</u>		
<u>DROPPED MEMBERS</u>			MALE	65,970 (71.79%)	
			FEMALE	25,890 (28.17%)	
DECEASED	63	CLICK HERE FOR CUMULATIVE MEMBERSHIP DATA	TOTAL FAMILY UNIT MEMBERS		0
CLUB CANCELLED	3,560				
OTHER	7,969				
TOTAL	11,592				
			FAMILY MEMBERS PAYING HALF DUES		0